

Syllabus amends - Set exercises and dances Grade 5 Ballet examinations, class awards and solo performance awards

The following amendments have been made to the *Set Exercises and Dances, Grade 5 Ballet* (first printed in 2013).

- Most recent amendments are added to the beginning of the document
- Each correction is contained within a box
- Each box contains the **date** of the amendment
- The correction itself is shaded

P99 – E23: Character Dance F – Male and Female (November 2016)

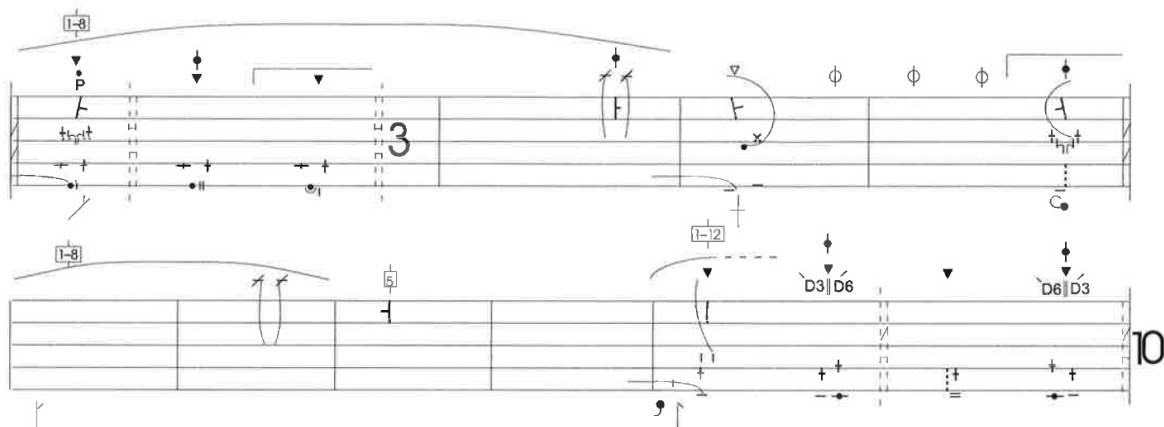
Description of correction: amendment to word notes for arms (last two paragraphs page 99) and amendments to Benesh Movement Notation to match notes.

& Swivel on left leg to left to face 2

Left arm lower to arms crossed low
devant fingers extended Head
turned over left shoulder

1-8 Repeat last counts 1-8 to other side facing 2 and travelling directly upstage

Arms lift to directly above head
wrists crossed fingers extended on
counts 1-4 Head turned to 1 on
count 5



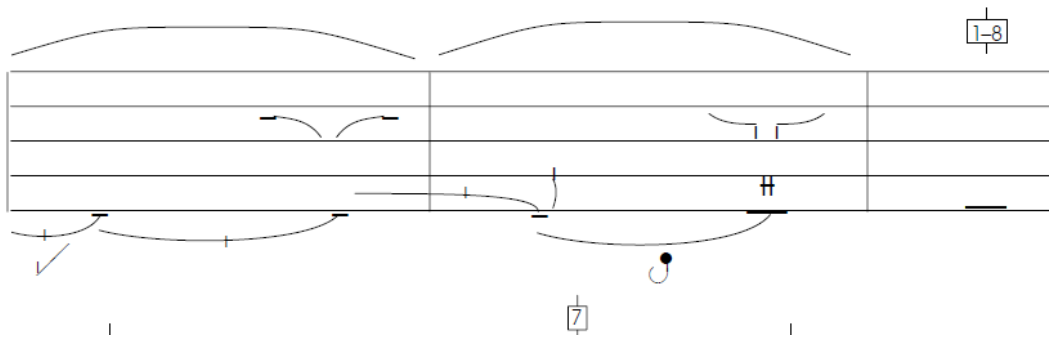
P42 – E27: Turns (June 2016)

Description of correction: new wording for & count.

- | | | |
|---|---|-----------|
| 1 | Travelling toward 6 relevé on right leg
in parallel retiré by half turn to right | Arms free |
| & | Left leg step into parallel retiré en
demi-pointe by half turn to right | |

P47 – E15: Grand allegro (February 2015)

Description of correction: Benesh notation - stave 4, bar 1: Omit dancer's count of 1-8 above bar 1 of stave 4



P27 – E09: Adage (November 2014)

Description of correction: change to timing for counts 5-6 and 7-8. Now listed as 5-7 and 8.

- | | | |
|-----|--|---|
| 5-7 | Step forward en fondu and assemblé
soutenu with quarter turn to left to
face 6 | Arms through bras bas and full port
de bras to 5th Head to 1 |
| 8 | Lower heels | Arms through 2nd to bras bas
Head erect |

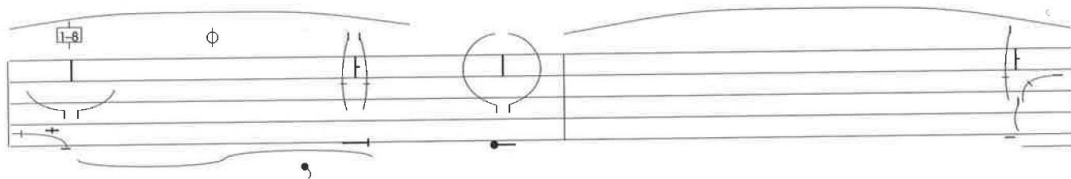
P26 – E09: Adage (amended January 2014)

Description of correction: change to timing for counts 1-2 and 3-4. Now listed as 1-3 and 4.

1-3	Step forward en fondu and assemblé soutenu with quarter turn to left to face 5	Arms through bras bas and full port de bras to 5th Head to 1
4	Lower heels	Arms through 2nd to bras bas Head erect

P29 – E09: Adage (amended January 2014)

Description of correction: Benesh notation change to timing for counts 1-2 and 3-4. Now listed as 1-3 and 4 as describe above.



P48 – E16: Dance A - Female (amended January 2014)

Description of correction: change to direction for counts 3-4.

3-4	Travelling toward 6 or 2 posé en avant and grande jeté en avant	Arms through 1st to 2nd arabesque line
-----	---	--